



Extruder Machine Accessories Soft Water Cooling System High Efficiency

Our Product Introduction

for more products please visit us on extrudergranulator.com

Basic Information

- Place of Origin: Nanjing, China
- Brand Name: HLD/KL
- Certification: CE
- Model Number: Various
- Minimum Order Quantity: 1 set
- Price: Price negotiable
- Packaging Details: Film packaging, bubble film packaging
- Delivery Time: 7 work days
- Payment Terms: L/C, D/A, D/P, T/T, Western Union, MoneyGram
- Supply Ability: 100 sets per month



Product Specification

- Product Name: Soft Water Cooling System
- Category: Low-voltage Electrical Appliances
- Usage: Industrial, Extruder Parts, food, Medical
- Tolerance: $\pm 0.01\text{mm}$
- Precision: High
- Weight: Customized
- Main Power: Customized
- Corrosion Resistance: Yes
- Durability: High
- Color: Customized
- Size: Customized
- Highlight: Extruder Machine Soft Water Cooling System, Extruder Accessories Soft Water Cooling System



Product Description

Extruder parts - soft water cooling system

The soft water cooling system in the extruder accessories is used to cool the heat-conducting parts (such as extruder heads, molds, etc.) in the extruder and its related equipment. It plays an important role in ensuring the stable operation of the equipment and products during the extrusion process. When selecting and using it, it is necessary to make reasonable configurations according to the scale, production requirements and process characteristics of the extruder to maximize production efficiency and product quality.

Attributes

Mainly use soft water (i.e. water with low hardness and low mineral content) to avoid clogging or corrosion of equipment during cooling.

It includes cooling water tank, circulation pump, cooler (heat exchanger), control valve, etc., which are used to transfer hot water from extruder and related equipment and cool it.

It is equipped with temperature controller and sensor to monitor and adjust the temperature of cooling water to ensure cooling effect and stable operation of equipment.

Functions

Transfer the heat generated during the extrusion process from the extruder and related equipment to the cooling water and cool the hot water to a safe temperature.

By circulating cooling water, the operating temperature of the extruder and its related equipment is kept within a suitable range to avoid overheating and damage to the equipment.

Water is the cooling medium. Compared with air cooling systems, soft water cooling systems are generally more effective in saving energy and reducing environmental impact.

Features

Designed as a high-efficiency cooling system, it can quickly and evenly reduce the temperature of the equipment and extruded products.

Equipped with an automated control system, it can adjust the flow and temperature of the cooling water according to actual cooling needs, improving the stability and efficiency of the system.

Corrosion-resistant materials and special coatings are selected to prevent corrosion and blockage caused by water quality problems during long-term use of the soft water cooling system.

Applications

Mainly used to cool the extruder head, mold and other heat-conducting parts of the extruder to ensure the stability of plastic materials and product quality during the extrusion process.

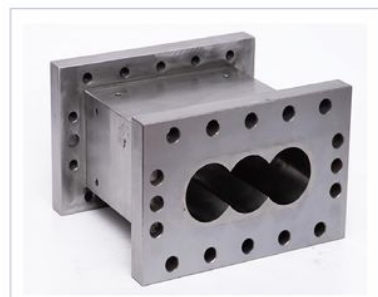
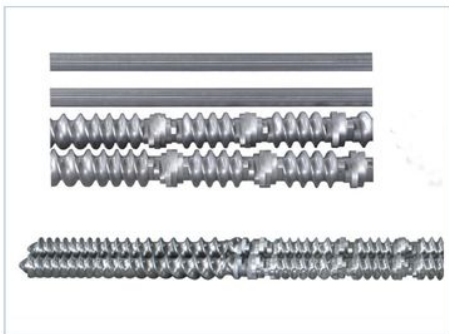
In the process of metal extrusion or casting, it is used to cool the mold or metal forming equipment to control the temperature and shape of the metal.

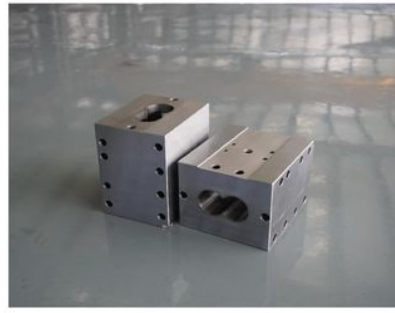
In chemical production, it is used to cool the reactor or other equipment to maintain the stability and safety of the chemical reaction.





Product details





FAQ

1:How many years of experience do you have?

Over 15 years experience in extruder industry.

2:Are you traders or manufacturers?What is the area of the factory?

We are manufacturer,The factory is over 5000 square meters.

3:Screw and barrel accessories, who is produced?

Our factory manufactures it ourselves

4:Can I have a sample order for extruder?

Yes, we welcome sample order to test and check quality. Mixed samples are acceptable.

5:How to proceed an order for ?

Firstly ,let us know your requirements or application.

Secondly ,We quote according to your requirements or our suggestions.

Thirdly ,customer confirms the samples and places deposit for formal order.

Fourthly, We arrange the production.

Finally, arrange delivery

6: Provide technology and formula?

For orders over a certain amount, we will provide the technology and formula to help you complete the project.

7: Have a catalogue?

[HLD Album.pdf](#)

 **Nanjing Henglande Machinery Technology Co., Ltd.**

 +86 15251884557

 jayce@hldextruder.com

 extrudergranulator.com

NO.11,Qinghu Road,Hushu Town,Jiangning District,Nanjing,china.