



CE Steel Extruder Parts Air Conveying Silo Vacuum Feeder Custom Specifications

Our Product Introduction

for more products please visit us on extrudergranulator.com

Basic Information

- Place of Origin: Nanjing, China
- Brand Name: HLD/KL
- Certification: CE
- Model Number: Various
- Minimum Order Quantity: 1 set
- Price: Price negotiable
- Packaging Details: Film packaging, bubble film packaging
- Delivery Time: 7 work days
- Payment Terms: L/C, D/A, D/P, T/T, Western Union, MoneyGram
- Supply Ability: 100 sets per month



Product Specification

- Product Name: Air Conveying Silo
- Category: Electrical Appliances, Extruder Parts
- Usage: Food, Industrial, Medical
- Tolerance: $\pm 0.01\text{mm}$
- Corrosion Resistance: Yes
- Durability: High
- Precision: High
- Main Power: Customized
- Color: Customized
- Dimension: Customized
- Weight: Customized



More Images



Product Description

Extruder parts - Air conveying silo

The air conveying silo (also called vacuum feeder) in the extruder accessories is a device used to convey powder, granular or pelletized raw materials to the extruder, which directly affects the raw material supply and production efficiency of the production process. When selecting and using it, it is necessary to reasonably configure and operate it according to the specific production needs and raw material characteristics to ensure the stability and efficiency of the extrusion process.

Attributes

The main body is usually made of stainless steel or other corrosion-resistant materials to adapt to the environment of chemicals and dust.

The internal parts are made of wear-resistant materials to ensure long-term efficient operation.

The pneumatic conveying principle is adopted, and the raw materials are sucked from the storage container or silo by the airflow generated by the fan and transported to the feed port of the extruder through the pipeline.

The equipment is usually equipped with a sophisticated control system that can adjust and monitor parameters such as wind power and feed speed to achieve precise raw material supply.

Functions

Designed as high-efficiency equipment, it can quickly and evenly transport various types of raw materials to improve production efficiency.

Use efficient fans and energy-saving designs to reduce energy consumption and production costs.

Usually have a user-friendly control interface and automation system, easy to operate, and reduce the technical requirements of operators.

Applications

Mainly used to convey plastic granules or powders to the extruder, such as in the production of pipes, films, profiles, etc.

Used to convey various powdered and granular chemical raw materials, such as granular materials, powdered fertilizers, etc.

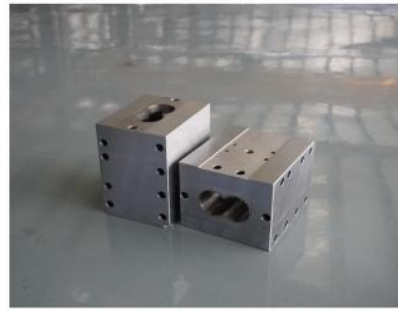
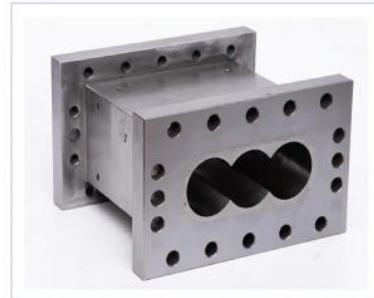
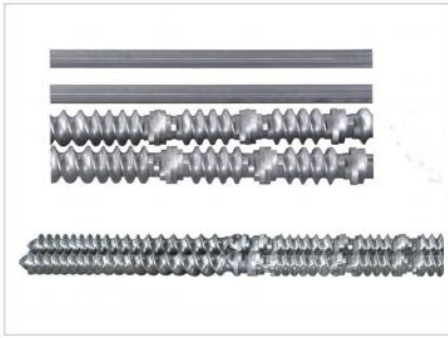
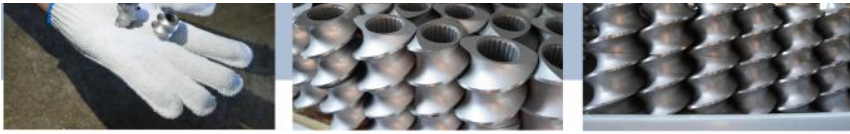
In the food industry, it is used to convey various powdered or granular food raw materials, such as grains, condiments, etc.





Product details





FAQ

1:How many years of experience do you have?

Over 15 years experience in extruder industry.

2:Are you traders or manufacturers?What is the area of the factory?

We are manufacturer,The factory is over 5000 square meters.

3:Screw and barrel accessories, who is produced?

Our factory manufactures it ourselves

4:Can I have a sample order for extruder?

Yes, we welcome sample order to test and check quality. Mixed samples are acceptable.

5:How to proceed an order for ?

Firstly ,let us know your requirements or application.

Secondly ,We quote according to your requirements or our suggestions.

Thirdly ,customer confirms the samples and places deposit for formal order.

Fourthly, We arrange the production.

Finally, arrange delivery

6: Provide technology and formula?

For orders over a certain amount, we will provide the technology and formula to help you complete the project.

7: Have a catalogue?

[HLD Album.pdf](#)

 **Nanjing Henglande Machinery Technology Co., Ltd.**

 +86 15251884557

 jayce@hldextruder.com

 extrudergranulator.com

NO.11,Qinghu Road,Hushu Town,Jiangning District,Nanjing,china.