



CE Extruder Machine Parts Hopper Stainless Steel Customizable Extrusion Hopper

Our Product Introduction

for more products please visit us on extrudergranulator.com

Basic Information

- Place of Origin: Nanjing, China
- Brand Name: HLD/KL
- Certification: CE
- Model Number: Various
- Minimum Order Quantity: 1 set
- Price: Price negotiable
- Packaging Details: Film packaging, bubble film packaging
- Delivery Time: 7 work days
- Payment Terms: L/C, D/A, D/P, T/T, Western Union, MoneyGram
- Supply Ability: 100 sets per month



Product Specification

- Product Name: Hopper
- Category: Extruder Parts, Extruder Accessories
- Usage: Food, Industrial, Medical
- Tolerance: $\pm 0.01\text{mm}$
- Main Power: Customized
- Color: Customized
- Dimension: Customized
- Weight: Customized



More Images



Product Description

Extruder parts - hopper

The hopper in the extruder accessories is a device used to store and provide the raw materials required by the extruder. It is of great significance to ensure the stability of raw material supply and production efficiency. Reasonable selection and use of hoppers can improve the overall efficiency and product quality of the production line.

Attributes

The hopper is usually made of stainless steel or wear-resistant plastic to ensure durability and corrosion resistance to chemicals.

The internal surface may be specially treated to prevent raw materials from adhering and accumulating.

The design is usually oval or square to facilitate the uniform flow of raw materials and stable installation of the hopper.

It may be equipped with anti-skid or anti-vibration facilities to ensure stability and safety during raw material delivery.

Depending on the production capacity of the extruder and the raw material consumption, the capacity of the hopper can be selected in different ways, ranging from small to large.

Functions

The main function is to store and provide plastic pellets, powder or granular raw materials required by the extruder.

The hopper is usually located above or on the side of the extruder, and the raw materials are transported to the feed port of the extruder by gravity or auxiliary equipment.

The design may include a protective cover or sealing device to prevent external contaminants from entering the hopper and maintain the quality and cleanliness of the raw materials.

The design of the hopper usually takes into account easy cleaning and maintenance to ensure operational hygiene during the production process and long-term stable operation of the equipment.

Features

The hopper is designed to be wear-resistant and corrosion-resistant, and can stably carry and transport various raw materials for a long time.

The design takes safety into consideration to prevent raw materials from leaking or the hopper itself from tipping over or being damaged, ensuring the safety of operators and equipment.

It can be customized and configured according to different extruder models and production needs to meet different production requirements and environmental conditions.

Applications

Mainly used in the production process of extruding various plastic products, such as pipes, films, profiles, etc.

In the rubber industry, it is used to transport and store rubber particles or granular raw materials, such as rubber tubes and seals.

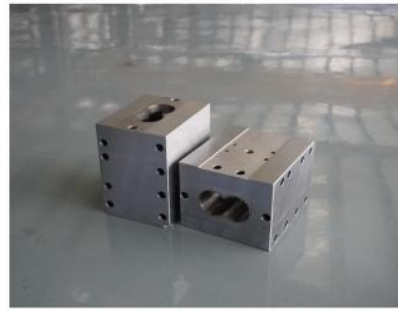
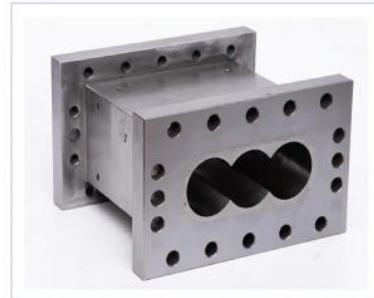
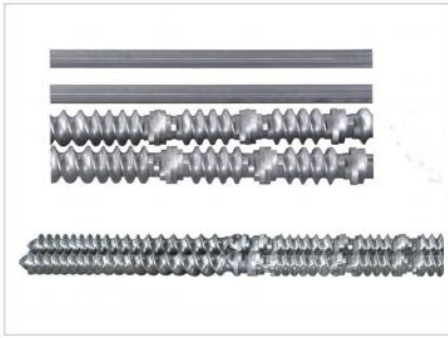
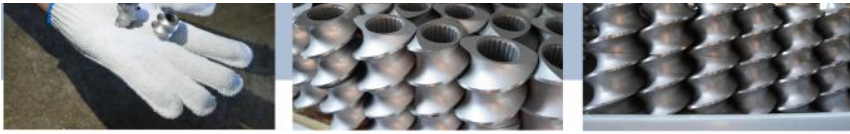
In food processing, it is used to store and transport various food raw materials, such as flour, grains, etc.





Product details





FAQ

1:How many years of experience do you have?

Over 15 years experience in extruder industry.

2:Are you traders or manufacturers?What is the area of the factory?

We are manufacturer,The factory is over 5000 square meters.

3:Screw and barrel accessories, who is produced?

Our factory manufactures it ourselves

4:Can I have a sample order for extruder?

Yes, we welcome sample order to test and check quality. Mixed samples are acceptable.

5:How to proceed an order for ?

Firstly ,let us know your requirements or application.

Secondly ,We quote according to your requirements or our suggestions.

Thirdly ,customer confirms the samples and places deposit for formal order.

Fourthly, We arrange the production.

Finally, arrange delivery

6: Provide technology and formula?

For orders over a certain amount, we will provide the technology and formula to help you complete the project.

7: Have a catalogue?

[HLD Album.pdf](#)

 **Nanjing Henglande Machinery Technology Co., Ltd.**



+86 15251884557



jayce@hldextruder.com



extrudergranulator.com

NO.11,Qinghu Road,Hushu Town,Jiangning District,Nanjing,china.