



## CE Plastic Extruder Parts Stainless Steel Roller Above Water Tank Corrosion Resistant

Our Product Introduction

for more products please visit us on [extrudergranulator.com](http://extrudergranulator.com)

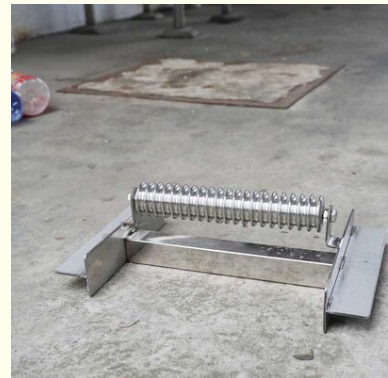
### Basic Information

- Place of Origin: Nanjing, China
- Brand Name: HLD/KL
- Certification: CE
- Model Number: Various
- Minimum Order Quantity: 1 set
- Price: Price negotiable
- Packaging Details: Film packaging, bubble film packaging
- Delivery Time: 7 work days
- Payment Terms: L/C, D/A, D/P, T/T, Western Union, MoneyGram
- Supply Ability: 100 sets per month



### Product Specification

- Product Name: Roller Above Water Tank
- Material: Stainless Steel
- Precision: High
- Usage: Industrial, Extruder Parts,
- Main Power: Customized
- Corrosion Resistance: Yes
- Durability: High
- Color: Customized
- Dimension: Customized
- Weight: Customized



### More Images



### Product Description

Extruder parts - Roller

Rollers are indispensable accessories in extruders. Their design and application must meet specific process requirements to ensure the efficiency of the entire extrusion process and product quality.

**Attribute:** Rollers are usually made of high-strength, heat-resistant and corrosion-resistant alloy materials to adapt to high temperature and chemically corrosive working environments.

**Function:** The main function of rollers in extruders is to drive the screw and provide the torque and speed required by the screw during the extrusion process. They ensure the stability of the screw speed, which is crucial to maintaining the uniformity of product quality.

**Feature:** The design of the roller needs to take into account its load bearing capacity and the matching with the motor power and reducer. High-speed and efficient extruders may require a higher-power motor and a correspondingly sized reducer to meet the needs of high production.

**Application:** Rollers are widely used in the extrusion process of plastics, rubber and other materials. They are used in single-screw, twin-screw and multi-screw extruders, especially in production lines that require high output and high efficiency.

**Auxiliary device:** In some cases, rollers may be used with auxiliary devices, such as dryers, magnetic separators, and metering devices, to improve the quality of the extruded melt, reduce production costs, and achieve automated operations.

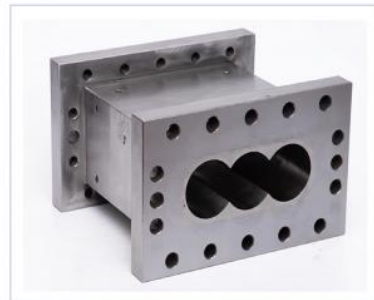
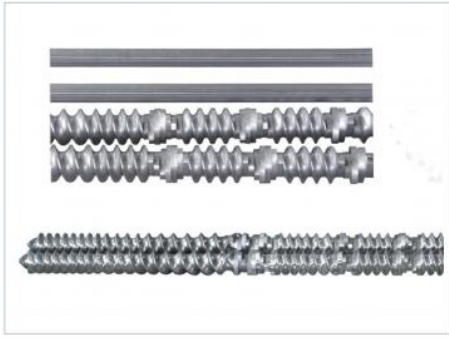
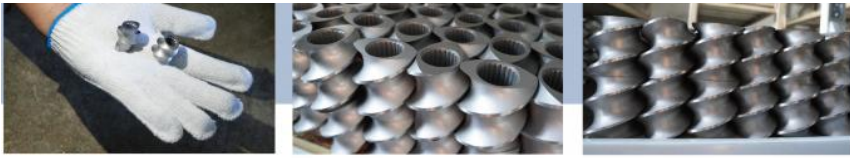
**Post-extrusion processing equipment:** Rollers are also used in post-extrusion processing equipment, such as cooling rollers and conveyor belts, which are used to ensure that the extruded material is properly handled when it is hot and deformable, and is ready for further processing or testing.





## Product details





## FAQ

### 1:How many years of experience do you have?

Over 15 years experience in extruder industry.

### 2:Are you traders or manufacturers?What is the area of the factory?

We are manufacturer,The factory is over 5000 square meters.

### 3:Screw and barrel accessories, who is produced?

Our factory manufactures it ourselves

### 4:Can I have a sample order for extruder?

Yes, we welcome sample order to test and check quality. Mixed samples are acceptable.

### 5:How to proceed an order for ?

Firstly ,let us know your requirements or application.

Secondly ,We quote according to your requirements or our suggestions.

Thirdly ,customer confirms the samples and places deposit for formal order.

Fourthly, We arrange the production.

Finally, arrange delivery

**6: Provide technology and formula?**


For orders over a certain amount, we will provide the technology and formula to help you complete the project.


**7: Have a catalogue?**

[HLD Album.pdf](#)

 **Nanjing Henglande Machinery Technology Co., Ltd.**

 +86 15251884557

 [jayce@hldextruder.com](mailto:jayce@hldextruder.com)

 [extrudergranulator.com](http://extrudergranulator.com)

NO.11,Qinghu Road,Hushu Town,Jiangning District,Nanjing,china.