



Direct from the manufacturer Extruder Machine Accessories Die Head Various Materials extrusion head

Our Product Introduction

for more products please visit us on extrudergranulator.com

Basic Information

- Place of Origin: Nanjing, China
- Brand Name: HLD/KL
- Certification: CE
- Model Number: Various
- Minimum Order Quantity: 1 set
- Price: Price negotiable
- Packaging Details: Film packaging, bubble film packaging
- Delivery Time: 7 work days
- Payment Terms: L/C, D/A, D/P, T/T, Western Union, MoneyGram
- Supply Ability: 100 sets per month



Product Specification

- Product Name: Die Head
- Category: Extruder Parts, Extruder Accessories
- Usage: Food, Industrial, Medical
- Tolerance: $\pm 0.01\text{mm}$
- Main Power: Customized
- Color: Customized
- Dimension: Customized
- Weight: Customized
- Highlight: extruder machine die head, extruder accessories various materials, extrusion head manufacturer direct



More Images



Product Description

Extruder parts - die head

The die head (also called extrusion head or extrusion die) in the extruder accessories is a key component used to form the final shape of the extruded product, which directly affects the quality and production efficiency of the extruded product. Its design and selection should be reasonably configured according to the specific extrusion product type, specifications and production requirements to ensure the stability of the production process and the consistency of product quality.

Attributes

The die head is usually made of high-strength alloy steel or wear-resistant materials to withstand high temperature and high pressure working environments.

Special surface treatment or coating may be used inside to improve wear resistance and extend service life.

Depending on the shape and size requirements of the extruded product, the structure of the die head can be a single screw, twin screw or other complex structural design.

The design of the die head may also include cooling channels or heating elements to control the temperature and shape of the extruded product.

Some die head designs have adjustable components, such as the size and shape of the extrusion port, to meet different product specifications and production requirements.

Functions

The main function is to extrude the heated plastic raw materials and form the desired product shape, such as pipes, films, profiles, etc., through the rotation and advancement of the extruder screw.

A cooling or heating system can be set inside the die to adjust the temperature of the extruded product and ensure the structural and dimensional stability of the product.

By adjusting the working pressure and speed of the extruder, the die can control the thickness and surface smoothness of the extruded product.

Features

The manufacture of die heads usually adopts precision machining technology to ensure the dimensional accuracy and surface quality of extruded products.

Wear-resistant materials and special coatings are used to extend the service life of the die heads and reduce maintenance requirements.

Some modern extruder systems are designed with a mechanism for quickly changing the die heads so that the production line can be flexibly adjusted according to production needs.

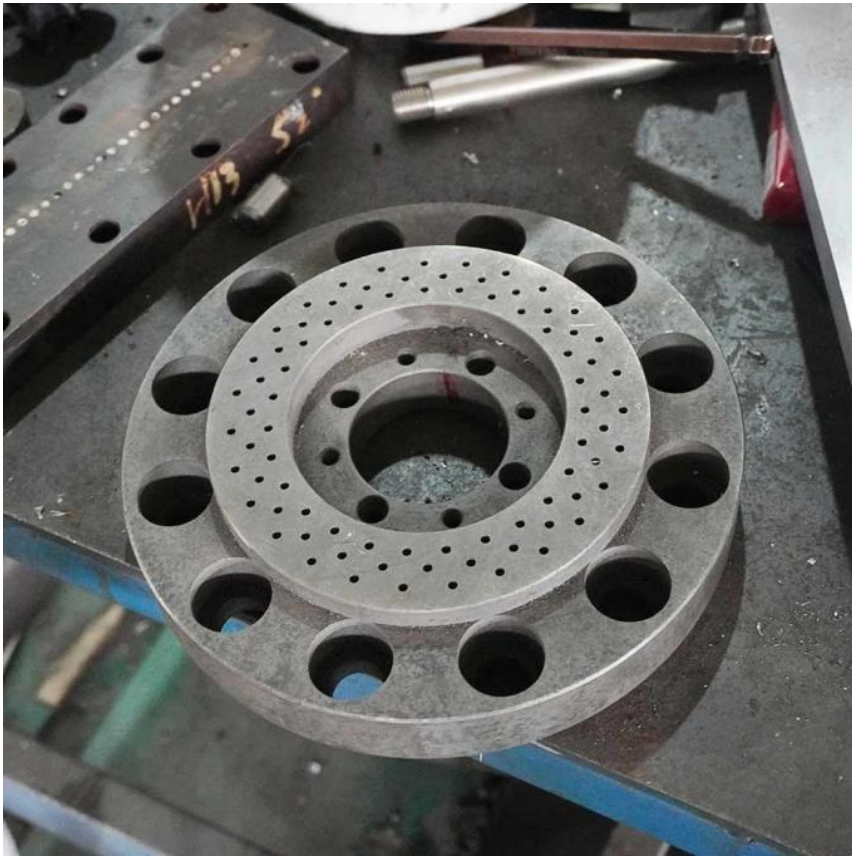
Applications

Mainly used in the production of various plastic extrusion products, such as pipes, films, profiles, plastic wires, etc.

In the food industry, it is used to produce plastic films or containers for various food packaging.

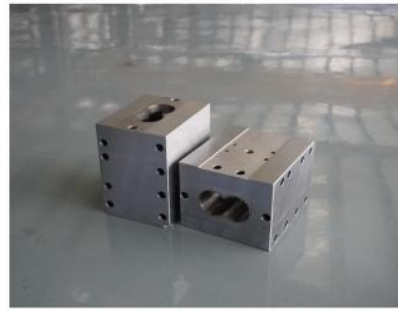
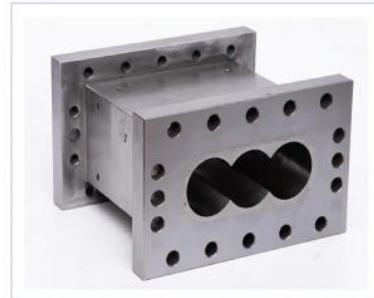
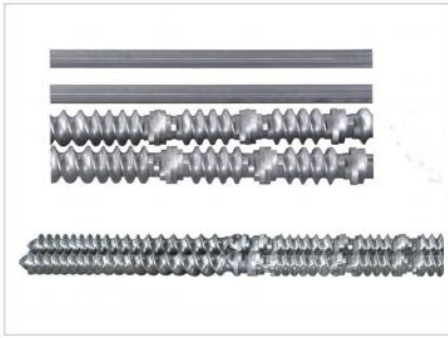
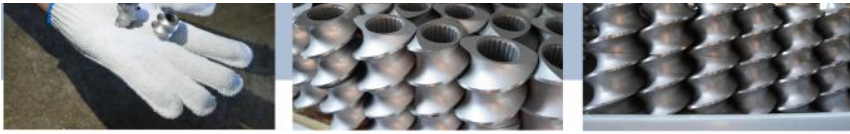
Used to extrude various building materials, such as plastic window frames, door frames, floors, etc.





Product details





FAQ

1:How many years of experience do you have?

Over 15 years experience in extruder industry.

2:Are you traders or manufacturers?What is the area of the factory?

We are manufacturer,The factory is over 5000 square meters.

3:Screw and barrel accessories, who is produced?

Our factory manufactures it ourselves

4:Can I have a sample order for extruder?

Yes, we welcome sample order to test and check quality. Mixed samples are acceptable.

5:How to proceed an order for ?

Firstly ,let us know your requirements or application.

Secondly ,We quote according to your requirements or our suggestions.

Thirdly ,customer confirms the samples and places deposit for formal order.

Fourthly, We arrange the production.

Finally, arrange delivery

6: Provide technology and formula?

For orders over a certain amount, we will provide the technology and formula to help you complete the project.

7: Have a catalogue?

[HLD Album.pdf](#)

 **Nanjing Henglande Machinery Technology Co., Ltd.**



+86 15251884557



jayce@hldextruder.com



extrudergranulator.com

NO.11,Qinghu Road,Hushu Town,Jiangning District,Nanjing,china.