



## Direct from the manufacturer Blow Dryer Factory Direct Production And Direct Sales Of Extruder Accessories Custom Specifications

Our Product Introduction

for more products please visit us on [extrudergranulator.com](http://extrudergranulator.com)

### Basic Information

- Place of Origin: Nanjing, China
- Brand Name: HLD/KL
- Certification: CE
- Model Number: Various
- Minimum Order Quantity: 1 set
- Price: Price negotiable
- Packaging Details: Film packaging, bubble film packaging
- Delivery Time: 7 work days
- Payment Terms: L/C, D/A, D/P, T/T, Western Union, MoneyGram
- Supply Ability: 100 sets per month



### Product Specification

- Product Name: Blow Dryer
- Category: Low-voltage Electrical Appliances
- Tolerance:  $\pm 0.01\text{mm}$
- Usage: Food Industrial, Extruder Parts
- Main Power: Customized
- Corrosion Resistance: Yes
- Color: Customized
- Dimension Weight: Customized
- Highlight: **custom extruder accessories, factory direct blow dryer, extruder parts specifications**



### More Images



### Product Description

Extruder parts - Blow dryer

A blow dryer, also known as an air dryer, is a device that removes moisture from the surface or inside of an object by generating a strong airflow, which is widely used in industrial and household fields. In extruder accessories, blow dryers are usually used to remove moisture from the surface of materials during extruder processing to improve product quality and production efficiency.

In industrial applications, blow dryers can be used to dry a variety of products, such as removing moisture from paper in pulp and paper manufacturing, or drying puffed foods, dried fruits and vegetables in food processing. In the automotive and printing industries, it is also used to dry paints and inks to ensure product quality.

The working principle of a blow dryer usually involves the use of a motor to drive a fan to generate airflow, heat the air through a heater to form a hot air, and then blow out the hot air to evaporate water on the surface of the object. Such devices typically include motors, fan blades, heaters, and wind speed regulation functions.

In extruder accessories, the design of the blow dryer may be more specific to meet the specific needs of the extrusion process, for example, it may need to be used directly with the extruder's discharge port to ensure that the material reaches the desired level of drying before further processing or packaging.

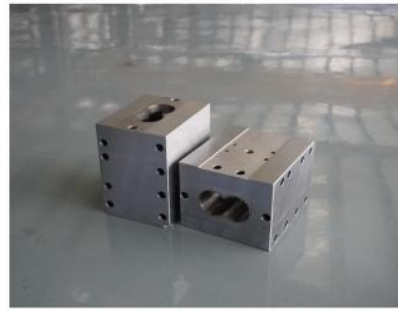
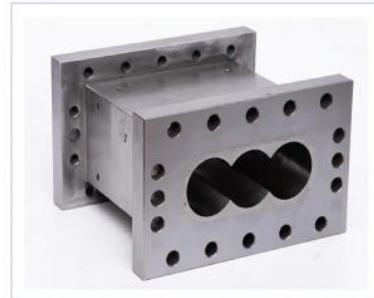
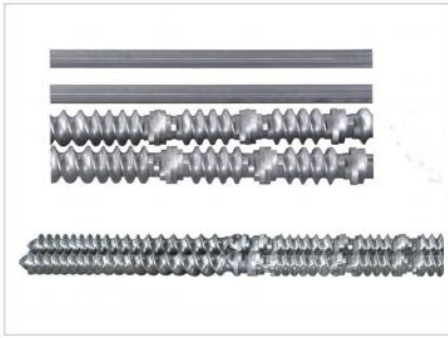
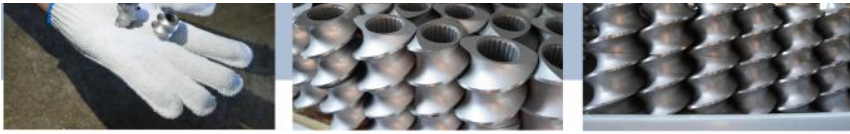
The blow dryer provided by Nanjing Henglan De Machinery Technology Co., Ltd. is a kind of auxiliary machine of twin-screw extruder, which is used in the plastic processing industry and helps to improve production efficiency and product quality





## Product details





## FAQ

**1:How many years of experience do you have?**

Over 15 years experience in extruder industry.

**2:Are you traders or manufacturers?What is the area of the factory?**

We are manufacturer.The factory is over 5000 square meters.

**3:Screw and barrel accessories, who is produced?**

Our factory manufactures it ourselves

**4:Can I have a sample order for extruder?**

Yes, we welcome sample order to test and check quality. Mixed samples are acceptable.

**5:How to proceed an order for ?**

Firstly ,let us know your requirements or application.

Secondly ,We quote according to your requirements or our suggestions.

Thirdly ,customer confirms the samples and places deposit for formal order.

Fourthly, We arrange the production.

Finally, arrange delivery

**6: Provide technology and formula?**

For orders over a certain amount, we will provide the technology and formula to help you complete the project.

**7: Have a catalogue?**

[HLD Album.pdf](#)

 **Nanjing Henglande Machinery Technology Co., Ltd.**

 +86 15251884557

 [jayce@hldextruder.com](mailto:jayce@hldextruder.com)

 [extrudergranulator.com](http://extrudergranulator.com)

NO.11,Qinghu Road,Hushu Town,Jiangning District,Nanjing,china.